
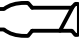





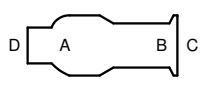
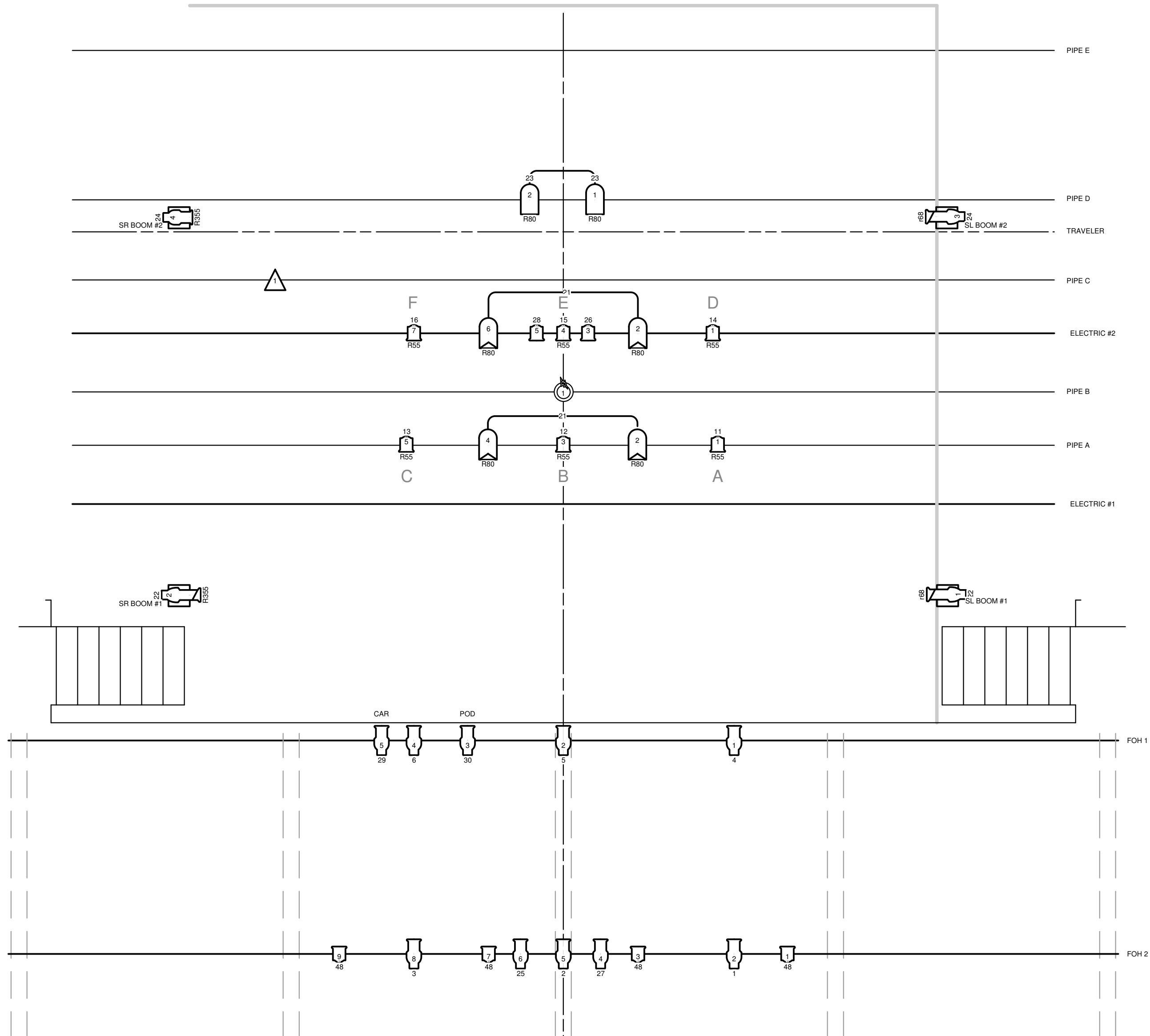


Legend

	ALTMAN 360Q 6X9
	STRAND 30°
	6" FRESNEL
	PAR 64 -- WFL
	PAR 64 -- MFL
	CHAUVET LED PANEL
	CHAUVET STROBE
	A - INST. NUMBER C - COLOR B - BEAM ANGLE D - CHANNEL



The 39 Steps

St. Andrews Middle School -- Austin, Texas

Lighting Plot

Designer: William Peeler Director: Jason Kruger

Scale: 1/4" = 1'-0"

1

of 1

November 25
2011

Revised
November 27